



# Backer Rod Mfg. Inc.

[www.backerrod.com](http://www.backerrod.com)  
Customer Service (800) 595 2950

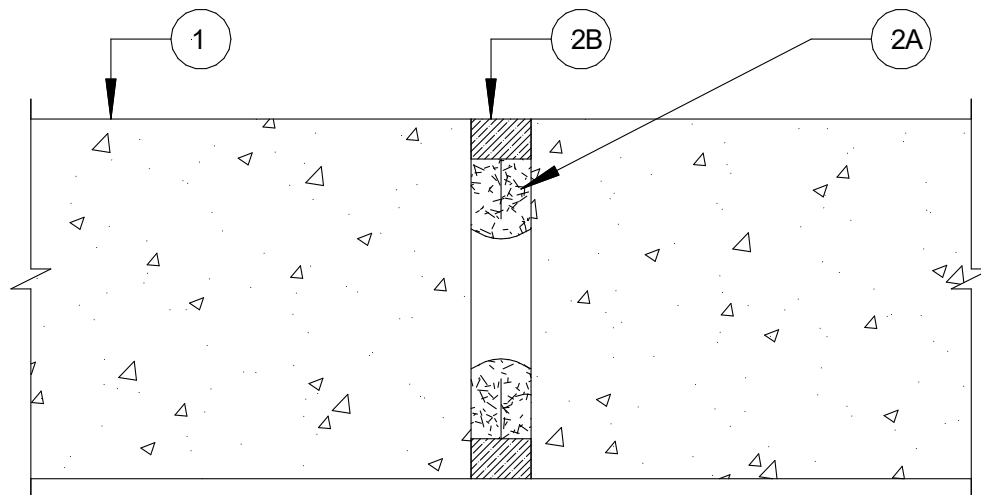


## UL System No. WW-S-0016

September 14, 2001

Assembly Rating – 2 Hr

Joint Width – 3/4 In. Maximum



1. **Wall Assembly** – Min 4 ½ in. thick reinforced lightweight or normal weight (100 – 150 pcf) structural concrete. Wall may also be constructed of any UL Classified **Concrete Blocks\***.

See **Concrete Blocks** (CATZ) category in the Fire Resistance Directory for names of Manufacturer's.

2. **Joint System** – Max width of the joint is ¾ in. The joint system shall consist of the following:

- A. **Forming Material\*** - For joint openings up to ½ in. in width, the forming material shall be a min of 3/8 in. thick. For joint openings up to ¾ in. in width, the forming materials shall be a min of 1/2 in. thick. A nom 2 in. width of forming material shall be folded in half and firmly packed into joint opening as a permanent form. Forming material to be recessed from each surface of wall as required to accommodate the required thickness of fill material.

**BACKER ROD MFG. INC. – ULTRA BLOCK®**

- B. **Fill, Void or Cavity Material\*** - Min ½ in. thickness of fill material applied within the joint, flush with each surface of wall.

**RHODIA SILICONES – FR-71**

\* Indicates such products shall bear the UL or cUL Certification Mark for jurisdictions employing the UL or cUL Certification (such as Canada), respectively.