



# Backer Rod Mfg. Inc.

[www.backerrod.com](http://www.backerrod.com)

Customer Service (800) 595 2950

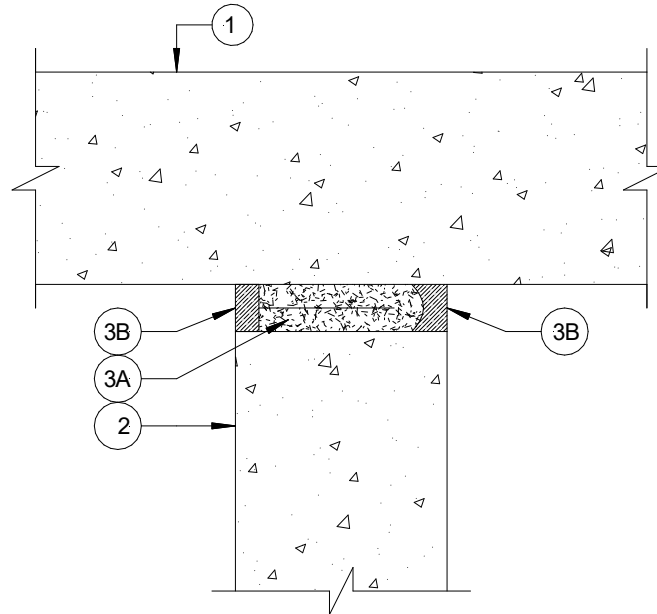


## UL System No. HW-S-0075

November 19, 2008

Assembly Rating – 2 Hr

Joint Width – 3/4 In. (19 mm) Maximum



1. **Floor Assembly** – Min 4-1/2 in. (114 mm) thick steel-reinforced lightweight or normal weight (100 – 150 pcf or 1600-2400 kg/m<sup>3</sup>) structural concrete.
2. **Wall Assembly** – Min 4-1/2 in. (114 mm) thick reinforced lightweight or normal weight (100 – 150 pcf or 1600-2400 kg/m<sup>3</sup>) structural concrete. Wall may also be constructed of ant UL **Classified Concrete Blocks**\*.

See **Concrete Blocks (CATZ)** category in the Fire Resistance Directory for names of manufacturers

3. **Joint System** – Max separation between bottom of floor and top of wall is 3/4 in. (19 mm) The joint system shall consist of the following:
  - A. **Forming Material\*** - A nom 6 in. (152 mm) width of forming material shall be folded in half, compressed min 25 percent and firmly packed into joint opening as a permanent form. Forming material to be recessed from each surface of wall to accommodate the required thickness of fill material.

**BACKER ROD MFG. INC. – ULTRA BLOCK®**
  - B. **Fill, Void or Cavity Material\*** - Min 1/2 in. (13 mm) thickness of fill material applied within the joint, flush with each surface of wall.

**MOMENTIVE PERFORMANCE MATERIALS – PENSIL 300 SEALANT**

**SPECIFIED TECHNOLOGIES INC – PENSIL 300 SEALANT or SPECSEAL SERIES SIL300 SEALANT**

\* Indicates such products shall bear the UL or cUL Certification Mark for jurisdictions employing the UL or cUL Certification (such as Canada), respectively.