



Backer Rod Mfg. Inc.

www.backerrod.com
Customer Service (800) 595 2950

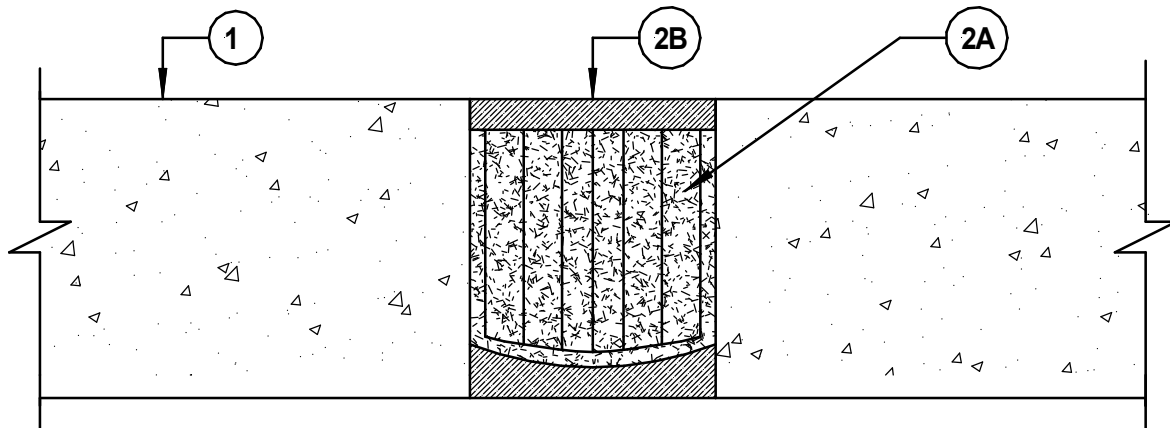


UL System No. WW-S-1034

April 12, 2005

Assembly Rating – 2 Hr

Joint Width – 4 In. Maximum



1. **Wall Assembly** – Min 5 in. (127 mm) thick reinforced lightweight or normal weight (100 – 150 pcf or 1600-2400 kg/m³) structural concrete. Wall may also be constructed of any UL Classified **Concrete Blocks***.

See **Concrete Blocks** (CATZ) category in the Fire Resistance Directory for names of manufacturers.

2. **Joint System** – Max width of the joint is 4 in. (102 mm). The joint system shall consist of the following:

- A. **Forming Material*** - Nom 11 in. (279 mm) wide by 3-3/8 in. (86 mm) thick blanket folded in half and compressed min 40 percent in thickness. Forming material installed into opening as a permanent form and to be recessed from each surface of wall to accommodate the required thickness of fill material.

BACKER ROD MFG. INC. – ULTRA BLOCK®

- B. **Fill, Void or Cavity Material*** - Min ½ in. (13 mm) thickness of fill material applied within the joint, flush with each surface of wall.

EGS NELSON FIRESTOP – CLK N/S (Non-Sag) Caulk

* Indicates such products shall bear the UL or cUL Certification Mark for jurisdictions employing the UL or cUL Certification (such as Canada), respectively.